

THE ABILITY TO SEE
WHAT OTHERS DO NOT
IN REAL ESTATE
MANAGEMENT & INVESTMENTS

J A M E S T O W N / R E - B R A N D



V I S I O N
P A T H F I N D E R
L E A D E R

ACUMIN PRO CONDENSED
REGULAR FONT
SECONDARY COPY

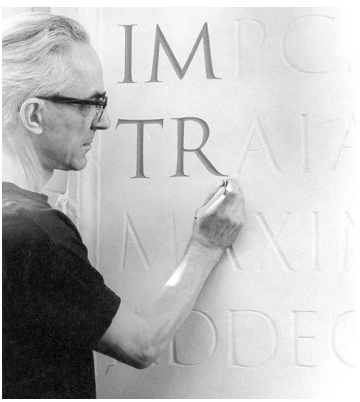


Jamestown employs more than 140 professionals in the United States, with headquarters in Atlanta and New York, and additional offices in Boston and San Francisco. The five pillars of the company denote leadership that is built on insight in todays marketplace. The ability to see what is not there is foundational to Jamestown. Building on the heritage color scheme while introducing hues with black and white keys this elegant direction.

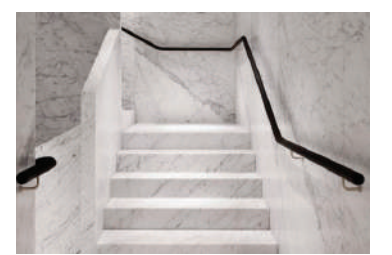


ETCHED IN STONE. STANDARD FOR TYPOGRAPHY
ELEGANT, HANDCRAFTED PRECISION & TIMELESS

TRAJAN PRO 3
ABCDEFGHIJKLMNOPQRSTUVWXYZ



**VISION
WITHOUT
EXECUTION
IS
DELUSION**
THOMAS EDISON

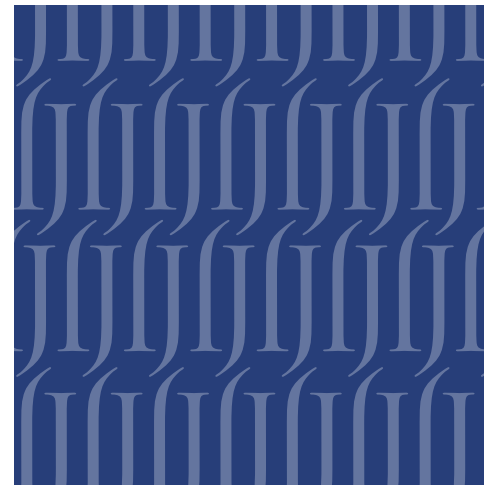


INTEGRITY EXCELLENCE INNOVATION PASSION RESPONSIBILITY

DESIGN ASSETS



BEAUTY THRU PRESSURE



BALANCED APPROACH



TIME TESTED



PURE VISION



SUPPLE LEATHER



FIELD & FOCUS

JAMESTOWN
MANAGEMENT & INVESTMENT

JAMESTOWN
MANAGEMENT & INVESTMENT



J A M E S T O W N S Y S T E M



Call
Anthony Piny
917-768-9873



JAMESTOWN
MANAGEMENT CORPORATION

Christoph A. Kahl
Principal, Chairman

Matt M. Bronfman
Principal, CEO

Michael Phillips
Principal, President

Chris Keppeck
CEO

Peace City Pocket
675 Pacific Lane Avenue
RE 7th Floor
Atlanta Georgia 30308

Chelsea Pocket
75 Ninth Avenue 5th Floor
Suite A
New York, NY 10011

Professor Andrew Morrissey
Executive Director
Executive MBA Program
University of Ottawa
1350 Sparks St., Suite 725
Ottawa, ON, K1P 1C4

Dear Professor Morrissey:

Please allow me to introduce the bearer of this letter, Ms. Catherine Hasslund. Catherine is the architect that I spoke to you about last week when we talked on the phone.

As I explained, I am working on a feasibility study for one of the university programs here in Montreal that is considering the development of an Executive Management Training Centre. Part of my study involves having to estimate the possible fit-up costs for the proposed new centre.

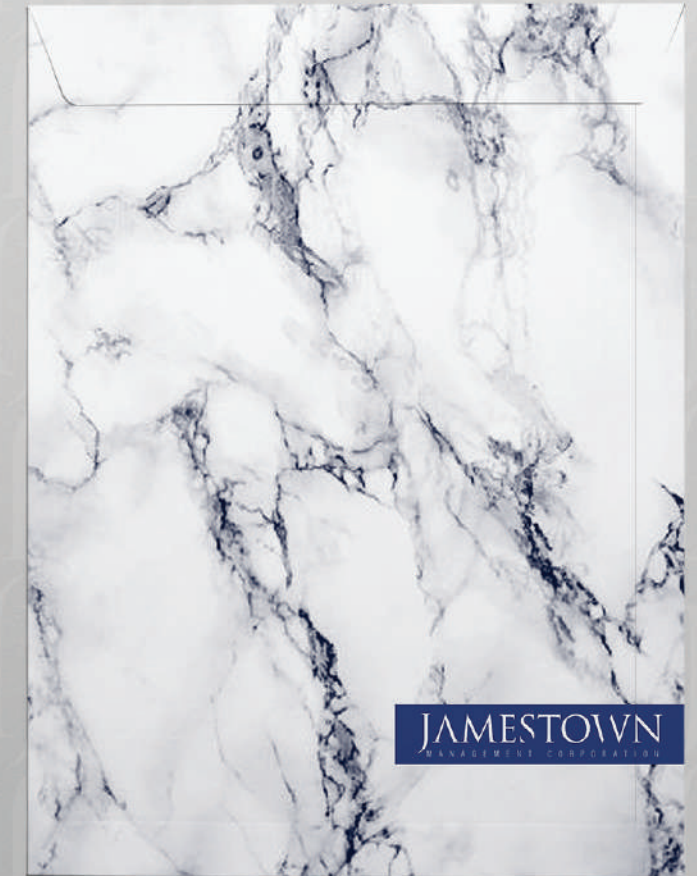
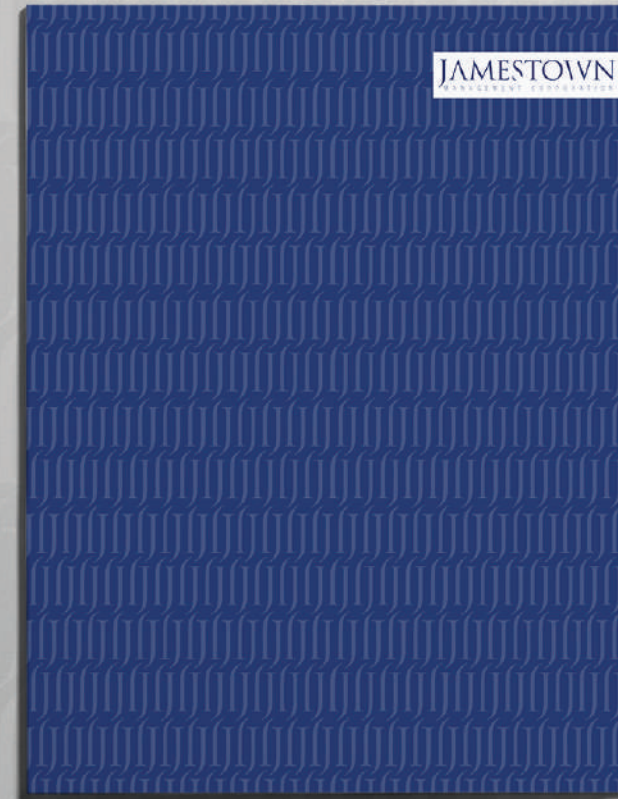
The client is intent on making sure they get a "state-of-the-art" executive training facility. Naturally I thought of my alma mater at the Ottawa U. Executive MBA Center, as the perfect example as to how it's done.

As we discussed, if you would be kind enough to have one of your staff members spend about one hour giving Catherine a tour of your facilities there, I would very much appreciate it. Catherine believes that it is important that she take the tour when the classroom and case rooms will not be in use, since she will need to take various measurements.

As you suggested, Catherine contacted Sharon Hudson of your staff to make sure that she would be traveling there at a time when it would be possible to do everything she needs to do.

Thanks so much Professor Morrissey, I really appreciate your co-operation on this matter.

All the best,



Christoph A. Kahl
Principal, Chairman
675 Pacific Lane Avenue
RE 7th Floor
Atlanta Georgia 30308

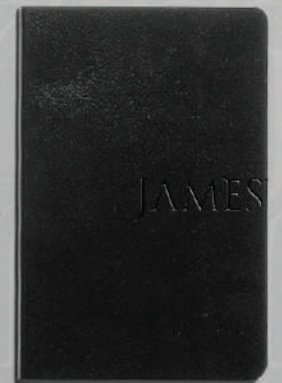
Professor Andrew Morrissey
Executive Director
Executive MBA Program
University of Ottawa
1350 Sparks St., Suite 725
Ottawa, ON, K1P 1C4



JAMESTOWN
MANAGEMENT CORPORATION

Christoph A. Kahl
Principal, Chairman

Chelsea Pocket
75 Ninth Avenue 5th Floor
Suite A
New York, NY 10011 USA
(212) 512-2222



JAMESTOWN
MANAGEMENT CORPORATION

Christoph A. Kahl
Principal, Chairman

Chelsea Pocket
75 Ninth Avenue 5th Floor
Suite A
New York, NY 10011 USA
(212) 512-2222



